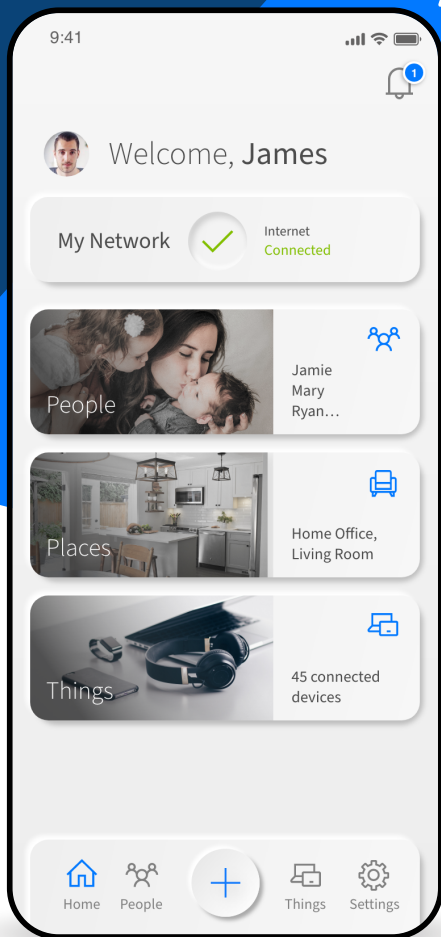




Your new and improved Wi-Fi experience is here

Introducing the new HTC's Advanced WiFi App



**Get ready for new enhancements to your Wi-Fi experience,
with the new HTC's Advanced WiFi App.**

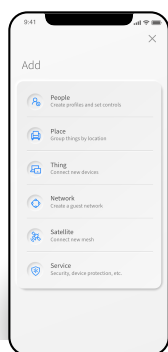
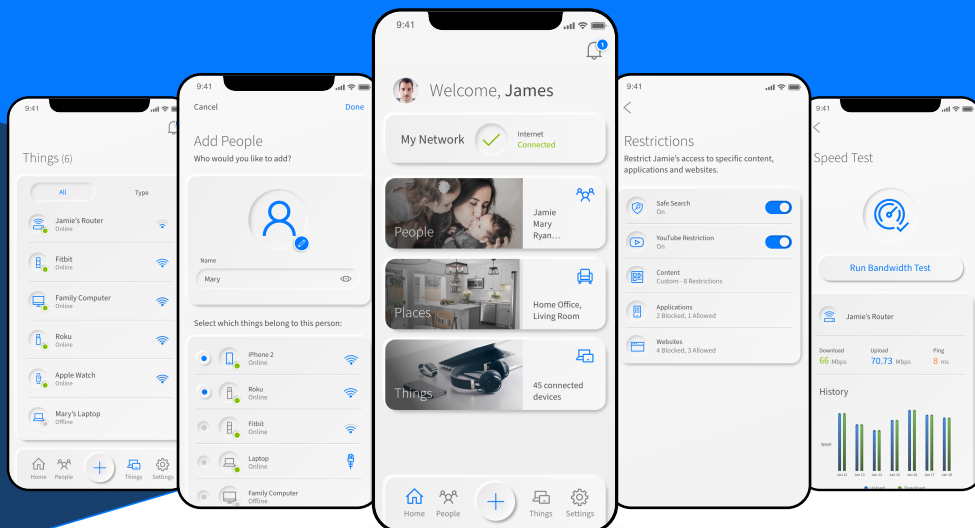
More details on page 2.





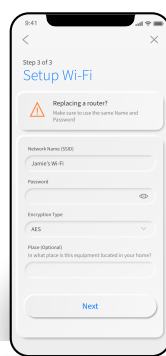
New Design

Attractive and intuitive, the new app makes it easier to create the tailored Wi-Fi experience you want.



People, Places and Things

You can easily create profiles, group devices by location and connect new devices.

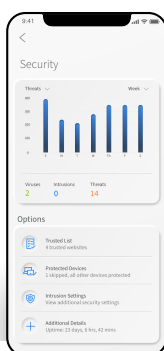


Usage, insights and control

Proactively identifies and alerts you on ways to enhance device connectivity. Now from a single profile you can monitor usage, pause the internet, add time limits and content restrictions and check signal strength.

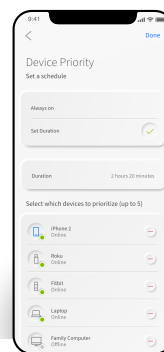
Safe, secure, peace of mind

The new security dashboard powered by ProtectIQ™ shows you total threats, intrusions, viruses blocked over time. You even can see protected devices and total protection uptime.



Device and Activity Priority

MyPriorities powered by ExperienceIQ™ gives you the power to set which devices should be prioritized over others. Plus you can prioritize by activity such as work to make sure your quality of service is maintained for things like Zoom or teams calls.



Enhanced interface, easier customization, improved experience.

Harrisonville Telephone Company

213 S. Main St. | Waterloo, IL
618.939.6112 | htc.net